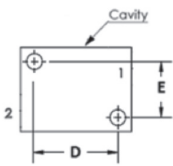


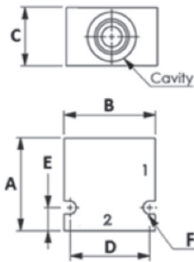
BODIES

- MADE IN ALUMINUM
- 3000 PSI MAXIMUM PRESSURE

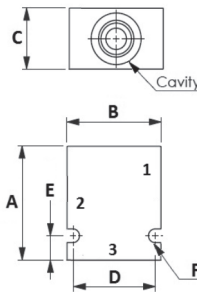
PART NUMBER	CAVITY	PORTS	DIMENSIONS					
			A	B	C	D	E	F
30102466	C8-2	SAE 06	2.0	2.0	1.25	1.50	1.50	1.50
30102359	C10-2	SAE 06	2.12	2.0	1.50	1.75	0.50	0.28
30102364		SAE 08						
30102813	C12-2	SAE 12	3.09	2.75	1.75	2.2	0.84	0.41
30102331	C16-2	SAE 12	3.0	3.0	2.0	2.44	0.75	
30102533	C8-3	SAE 06	2.5	2.25	1.25	1.75	0.25	0.28
30102354	C10-3	SAE 08	2.5	2.5	1.5	2.25	0.38	
30102535	C8-4	SAE 06	3.0	2.25	1.25	1.75	0.50	0.28
30102367	C10-4	SAE 08	3.25	2.5	1.5	2.25	0.38	



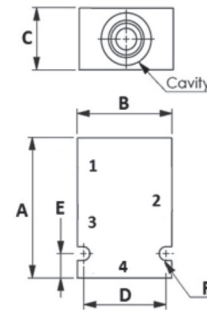
C8-2 BODY



C10-2 TO C16-2 BODIES



C8-3 AND C10-3 BODIES

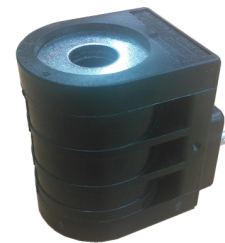


C8-4 AND C10-4 BODIES

COILS

- DIN CONNECTOR MODELS
- OTHER VOLTAGE & TYPE OF CONNECTION AVAILABLE
- LOW POWER CONSUMPTION AVAILABLE. FOR SUBSTANTIAL SAVING.

PART NUMBER	VOLTAGE	WATTS	I. D.	HEIGHT	WIDTH
P-HC-12	12V DC	19	1/2"	1.78	1.25
P-HC-24	24V DC				
P-HC-11	110V AC				
D-HC-12	12V DC	22	1/2"	2.03	1.56
D-HC-24	24V DC				
D-HC-11	110V AC				
L-HC-12	12V DC	22	5/8"	2.03	1.56
L-HC-24	24V DC				
L-HC-11	110V AC				
T-HC-12	12V DC	28	3/4"	1.96	2.38
T-HC-24	24V DC				
T-HC-11	110V AC				
EC04W-200HE	12V DC	20	1/2"	1.41	1.51
EC04W-200HD	24V DC				
EC04W-200HB	110V AC				



DIN CONNECTORS

PART NUMBER	DESCRIPTION
EMM43650A-DC-BLK	NO LED
EMM43650A-110RAC-LED	NO LED , WITH RECTIFIER (AC TO DC)
EMM43650A-DC-LED	WITH LED 12V/ 24V DC/AC
EMM43650A-110AC-LED	WITH LED 110V DC/AC

OTHER CONNECTORS AVAILABLE

